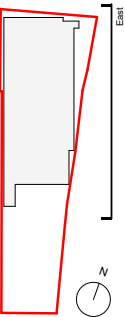


NOTE:
Drawing issued for specified purposes only.
Do not scale from this drawing for construction purposes.
All dimensions on this drawing are to be measured on site.
Clarify any discrepancies or queries with Fatkin.
This drawing is copyright Fatkin Ltd 2021.

KEY



MATERIAL KEY:

1. Illuminated signage.
2. Golden coloured precast concrete panels with a gooved relief texture.
3. Golden coloured precast concrete panels with a smooth flat texture.
4. Glazed window with louvred rainscreen steel panels.
5. Metal door.
6. Red glass reinforced gypsum column casing.
7. Expanded mesh panels.
8. Finely perforated folded aluminium panels.
9. Perforated metal panels with image sampling.
10. Double steel security door.
11. Louvred rainscreen steel panels.
12. Metallic handrail balustrade (1100 mm).

P2 Planning	02/11/2021
P1 Planning	18/10/2021
Rev Description	Date



020 8563 7711 studio@fatkin-design.com

Stevenage MSCP

Proposed General Arrangement
East Elevation

ISSUED:	02/11/21
SCALE:	1 : 100 @ A0
PURPOSE:	Planning

P2

210311-FTK-MSCP-XX-DR-AX-30502

